

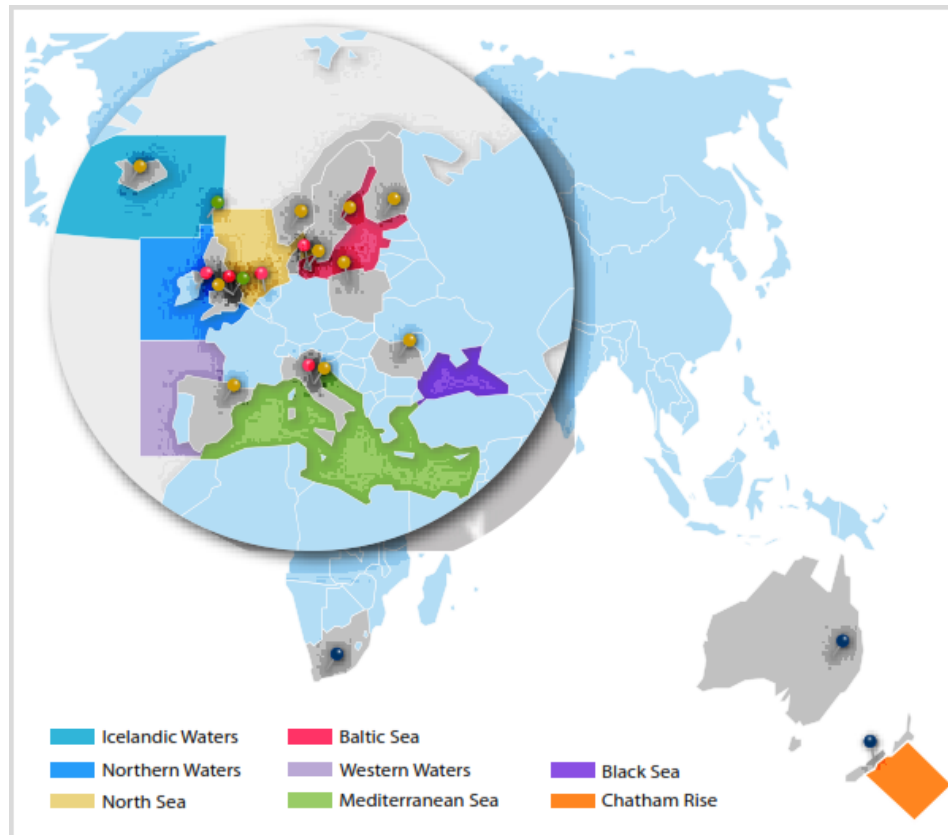
# MareFrame POLICY DAY

13 December 2017

Comics Art Museum – Brussels, Rue des Sables 20, Brussels



## Increased use of an Ecosystem-based Fisheries Management Solutions



@MareFrame  
@MatisIceland  
@Haskoli\_Islands  
@EUScienceInnov

**Coordinator:** Anna Kristín Daníelsdóttir – MATIS, @Danielsdottirk

**Scientific Manager:** Gunnar Stefánsson – UI, @gstefans

**Administrative Manager:** Oddur Már Gunnarsson – MATIS, @OddurMar



This project has received funding from the European Union's Seventh Framework Programme for research, technological development and demonstration under grant agreement no. 613571

# Societal challenges and co-creation

## MareFrame

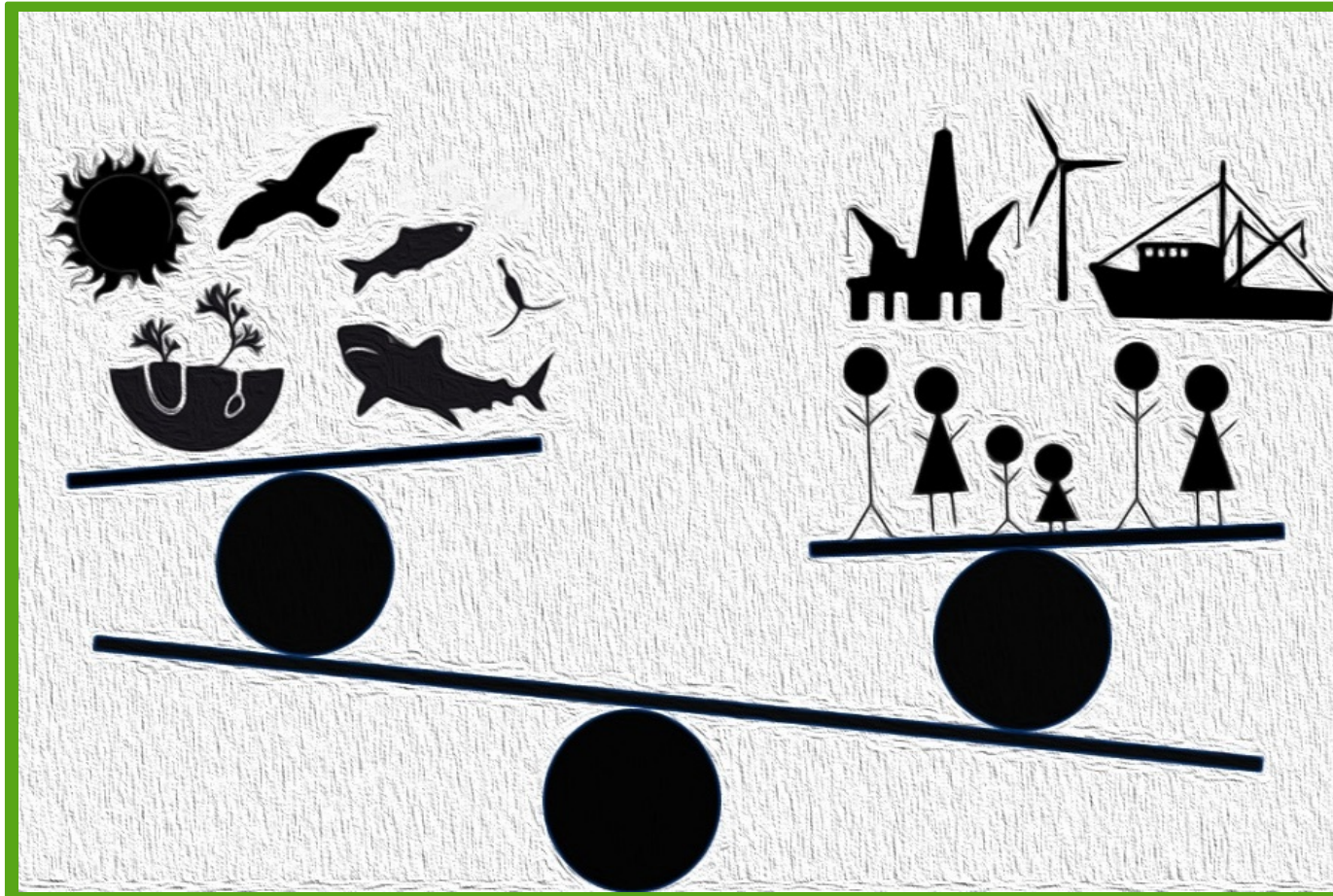
Co-creating Ecosystem-Based Fisheries Management Solutions



This project has received funding from the European Union's Seventh Framework Programme for research, technological development and demonstration under grant agreement no.613571.

Integrated assessment  
Advice and Decision Support Framework (DSF) for Ecosystem-based Fisheries Management (EBFM)  
Implementation – CFP, MSFD and Impact

# Science for sustainable seas



Reference:  
ICES/AORA + FAO workshop  
on making the ecosystem approach  
operational 2016



This project has received funding from the European Union's Seventh Framework Programme for research, technological development and demonstration under grant agreement no. 613571

# MareFrame

ALL TOGETHER towards sustainable management, better use and economic sustainability of marine resources.....BLUE BIOECONOMY – BLUE GROWTH



SAF|21

MareFrame



This project has received funding from the European Union's Seventh Framework Programme for research, technological development and demonstration under grant agreement no. 613571



# The MareFrame Legacy

## Decision Support Framework

MareFrame

Co-Creation



Models



Educational  
Resources



Decision  
Support  
Tools



Take what  
you need

Use it!



This project has received funding from the European Union's Seventh Framework Programme for research, technological development and demonstration under grant agreement no. 613571

**“Co-creation is OK”**

**MareFrame**

**“Turn Stakeholders into Takeholders”**



# CO-CREATION = IMPACTFUL SCIENCE

	Criteria/Management Alternatives	Business as Usual	Multispecies Max. Economic Yield	Max Conservation
CFP COMPLIANCE	Stocks within fishing mortality threshold			
	Stocks with spawning stocks biomass > MSY			
ECOSYSTEM ASPECTS	Within spawning stock biomass risk limits			
	Bottom disturbance			
	Charismatic species bycatch			
ECONOMIC ASPECTS	Pelagic profit			
	Demersal profit			
SOCIAL ASPECTS	Fleet labour			
	Processing labour			
	Non-viable fleets			

# Roadmaps for exploitation of MareFrame outputs



## MareFrame on-going inputs for ICES



### SINGLE SPECIES

- WGBIE** Working Group on Bay of Biscay and Iberian Waters Ecoregion
- WGDEEP** Working group on biology and assessment of deep-sea fisheries resources
- WGHANSA** Working Group on Southern Horse Mackerel, Anchovy and Sardine
- WGMIXFISH** Working Group on Mixed Fisheries Advice

### GES DESCRIPTORS



- West of Scotland Biomass-based indicators and Trophic level based indicators
- Baltic Pressure descriptor
- North Sea Pressure descriptor
- South Western Waters Cetaceans in WGMME
- South Western Waters Pressure descriptor Anchovy



### MODEL ADVANCES

- Gadget** Working document: "A GADGET Multi-species models for cetacean and hake interactions in the Iberian Peninsula"
- Atlantis, Ewe** Icelandic continental shelf-area Multi-species presentation
- EwE** West of Scotland Multi-species key run
- EwE** Baltic Sea Multi-species key run
- ToR d** Investigate the performance of multi-model ensemble in comparison to single model approach for the Baltic Sea
- Green Model** Presentation: "Green Model for the North Sea"

### INTEGRATED ADVICE



- WKDEICE** Working Group on DEveloping Integrated AdvICE for Baltic Sea ecosystem-based fisheries management
- WGMME** Working Group on Marine Mammal Ecology

## MareFrame alternatives for ICES



**TRAINING COURSES**  
(e.g. Gadget)



**AD HOC WORKSHOPS 2017**  
(e.g. from WGs findings)

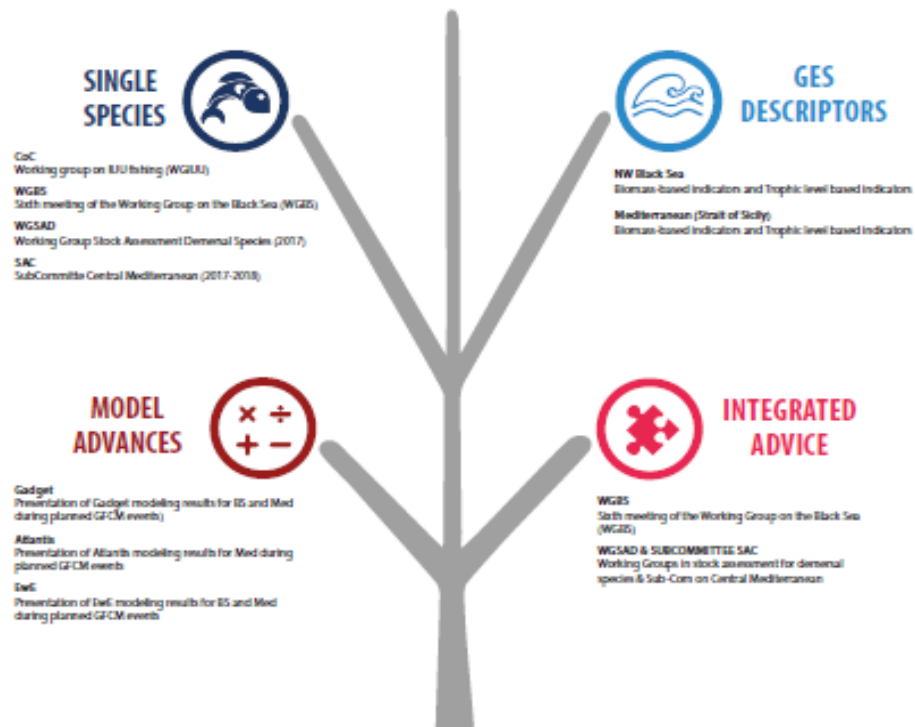


**JOINT SESSIONS ICES-STEFCF 2018**  
Decision Support Tools for the EAFM



**ASC 2017 ICES ECOSYSTEM APPROACH**  
Meeting Point

## GFCM RoadMap



## Options – Strategic Actions



**AD HOC WORKSHOPS 2017**



**JOINT SESSIONS GFCM-STEFCF 2018**



**TWINNING WITH BLACK SEA4FISH PROJECT**



# MareFrame

ALL TOGETHER towards sustainable management, better use and economic sustainability of marine resources.....BLUE BIOECONOMY – BLUE GROWTH



SAF|21

MareFrame



This project has received funding from the European Union's Seventh Framework Programme for research, technological development and demonstration under grant agreement no. 613571

## The Sustainable Development Goals (SDGs) by 2030 (United Nations) and the Paris Agreement on Climate

